



Campus Map for TAC/EC

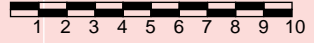
July 1, 2002

University Switchboard - (413) 545-0111

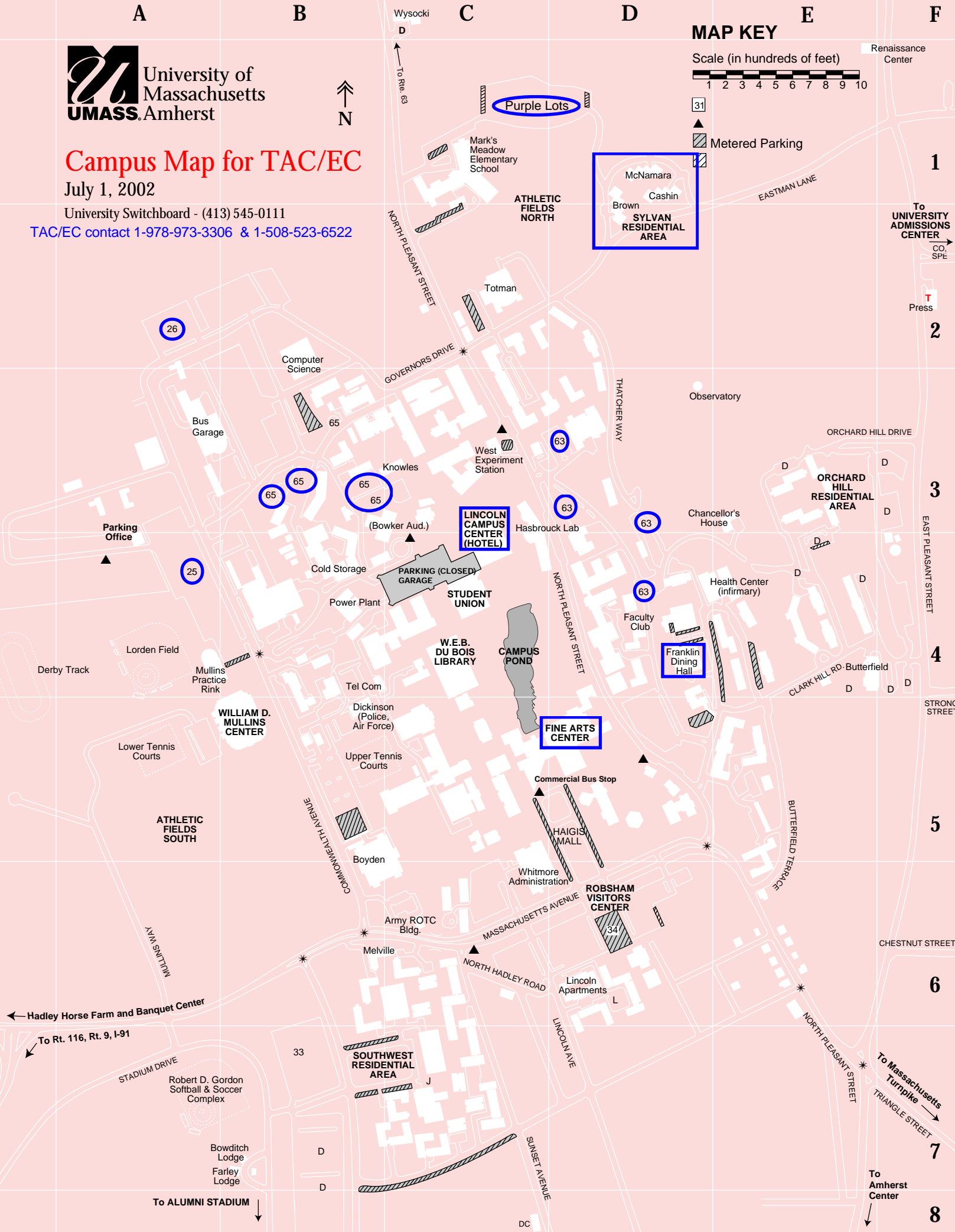
TAC/EC contact 1-978-973-3306 & 1-508-523-6522

MAP KEY

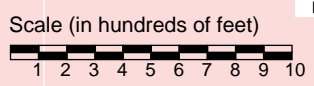
Scale (in hundreds of feet)



- Metered Parking
- Metered Parking



University of Massachusetts
UMASS Amherst



Metered Parking

To UNIVERSITY ADMISSIONS CENTER

To Press

To ORCHARD HILL RESIDENTIAL AREA

To BUTTERFIELD

To CHESTNUT STREET

To MASSACHUSETTS TURNPIKE

To TRIANGLE STREET

To AMHERST CENTER

Hadley Horse Farm and Banquet Center

To Rt. 116, Rt. 9, I-91

Robert D. Gordon Softball & Soccer Complex

Bowditch Lodge
Farley Lodge

To ALUMNI STADIUM

University of Massachusetts
UMASS Amherst

Campus Map for TAC/EC

July 1, 2002

University Switchboard - (413) 545-0111

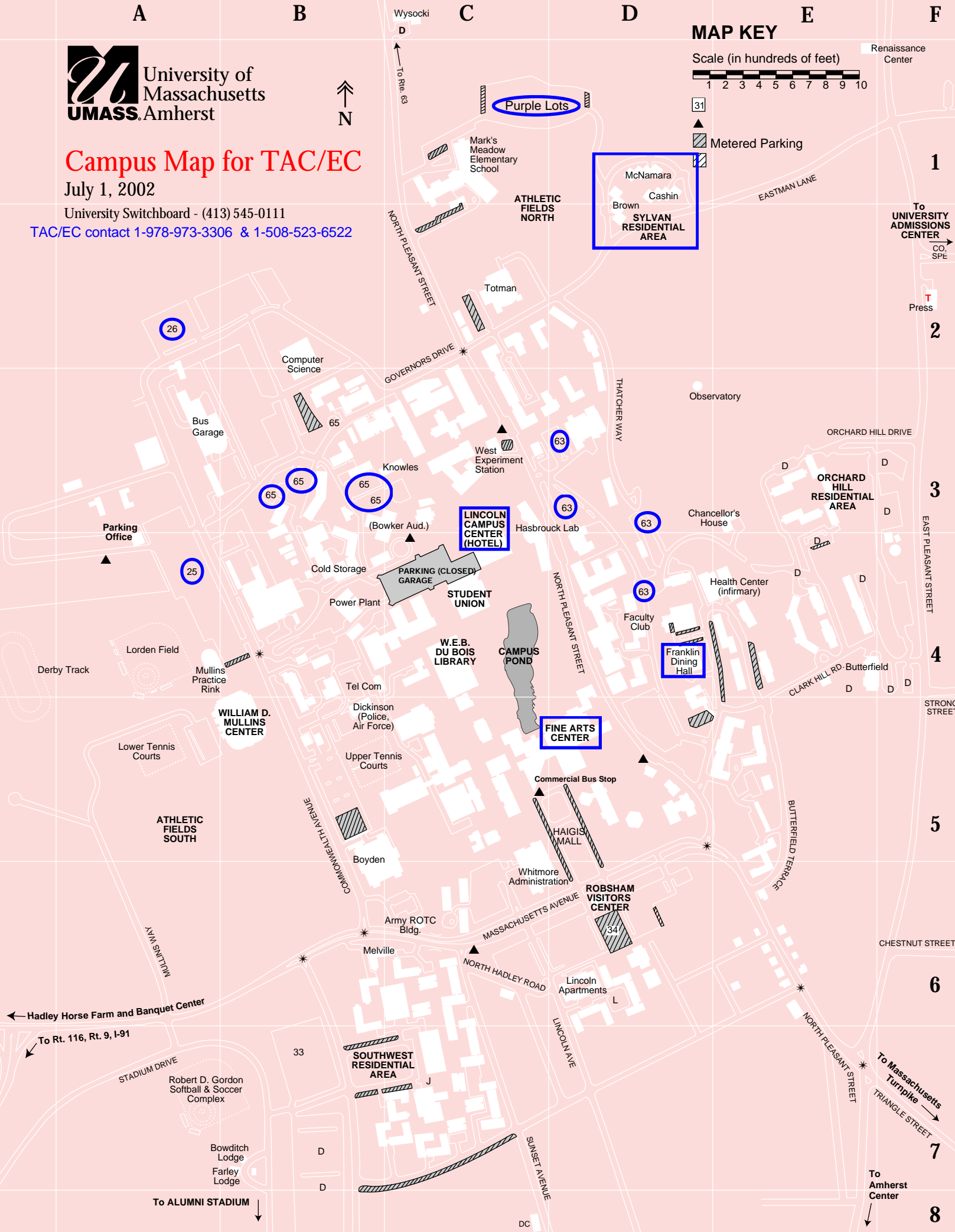
TAC/EC contact 1-978-973-3306 & 1-508-523-6522

MAP KEY

Scale (in hundreds of feet)



- Metered Parking
- Metered Parking



To UNIVERSITY ADMISSIONS CENTER

To Press

To ORCHARD HILL RESIDENTIAL AREA

To BUTTERFIELD

To CHESTNUT STREET

To MASSACHUSETTS TURNPIKE

To TRIANGLE STREET

To AMHERST CENTER

Hadley Horse Farm and Banquet Center

To Rt. 116, Rt. 9, I-91

Robert D. Gordon Softball & Soccer Complex

Bowditch Lodge
Farley Lodge

To ALUMNI STADIUM